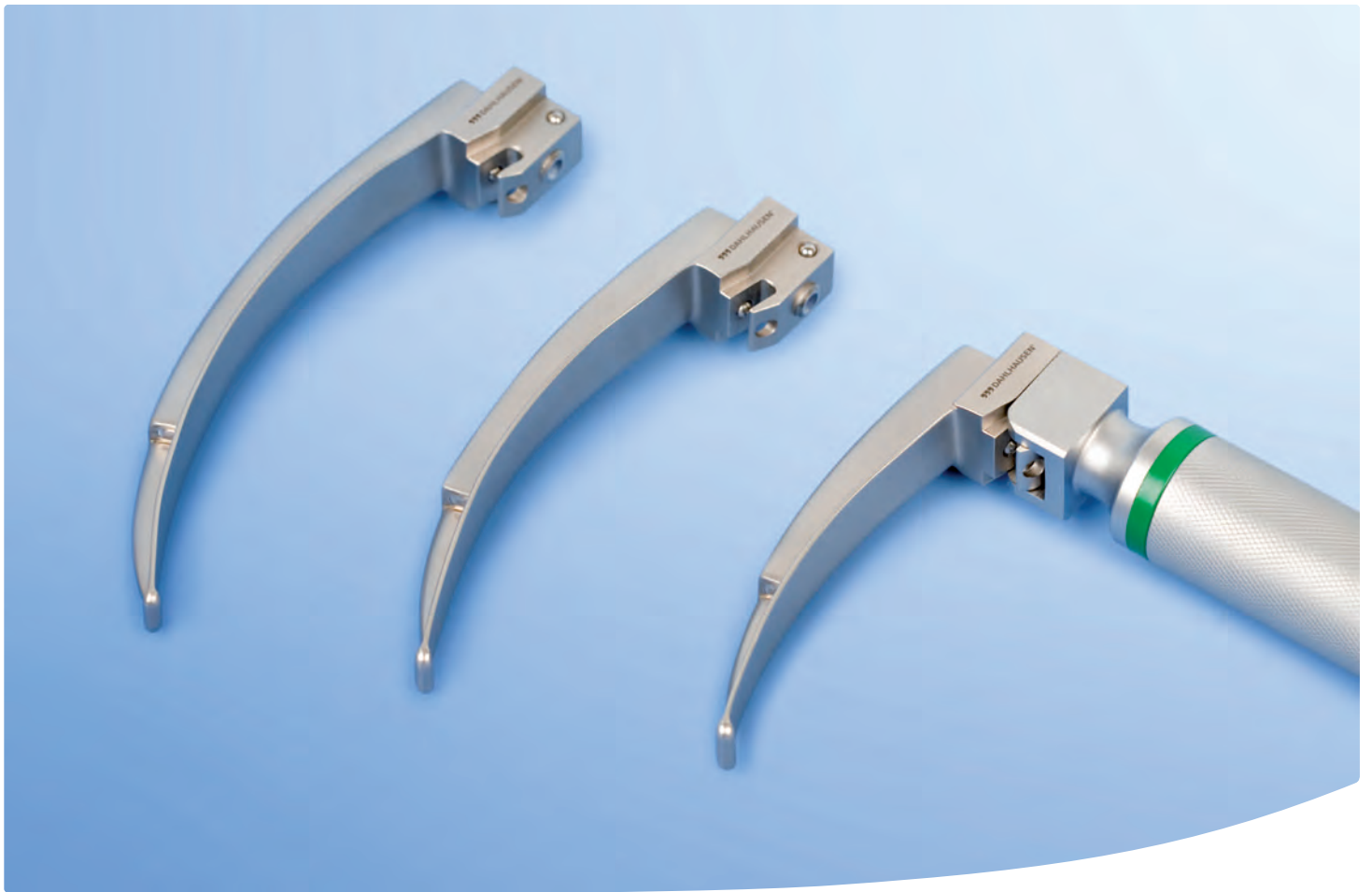


# Components

Description	Pack	REF
Valve for O2 reservoir	1	51.500.00.436
Resuscitator silicone, adult, 1.700 ml	24	51.500.00.452
Resuscitator silicone, adult, 1.700 ml, with Pop Off Valve	24	51.500.00.453
Resuscitator silicone, pediatric, 550 ml, with Pop Off Valve	24	51.500.00.454
Resuscitator silicone, neonatal, 280 ml, with Pop Off Valve	24	51.500.00.458
PEEP valve adapter 22 mm	10	51.500.00.501
Storage case for resuscitator, adult	1	51.500.00.524
Storage case for resuscitator, pediatric	1	51.500.00.526
Outlet valve	1	51.500.00.528
Oxygen reservoir 2.500 ml	1	51.500.00.538
Oxygen reservoir 600 ml	1	51.500.00.540



P. J. Dahlhausen & Co. GmbH  
Emil-Hoffmann-Straße 53  
50996 Köln · Germany  
Phone: +49 (0) 2236 3913 - 0  
Fax: +49 (0) 2236 3913 - 409  
export@dahlhausen.de  
www.dahlhausen.de



## Intubation

Laryngoscopes  
Guedel Tubes  
Nasopharyngeal Tubes  
Endotracheal Tubes  
Laryngeal Masks  
Respiration Masks  
Resuscitators

# Laryngoscopes

## Blades

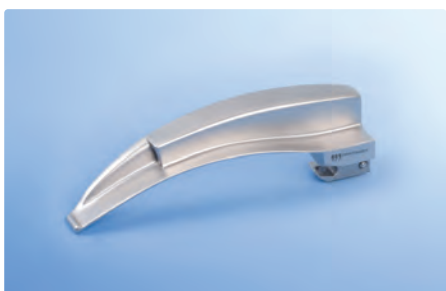


REF 90.003.10.030-040

### Flex Blade PJD Fibre Optic

With integrated light conductor and with flexible tip for lifting the epiglottis

Description	Pack	REF
Size 3	1	90.003.10.030
Size 4	1	90.003.10.040



REF 90.003.10.080-500

### McIntosh Blade PJD Fibre Optic

With integrated light conductor

Description	Pack	REF
Size 0	1	90.003.10.080
Size 1	1	90.003.10.100
Size 2	1	90.003.10.200
Size 3	1	90.003.10.300
Size 4	1	90.003.10.400
Size 5	1	90.003.10.500



REF 90.003.10.699-705

### McIntosh Blade PJD Fibre Optic

With integrated light conductor – for single use only

Description	Pack	REF
Size 00	1	90.003.10.699
Size 0	1	90.003.10.700
Size 1	1	90.003.10.701
Size 2	1	90.003.10.702
Size 3	1	90.003.10.703
Size 4	1	90.003.10.704
Size 5	1	90.003.10.705

# Laryngoscopes

## Blades



REF 90.003.96.999-97.004

### Miller Blade PJD Fibre Optic

With integrated light conductor

Description	Pack	REF
Size 00	1	90.003.96.999
Size 0	1	90.003.97.000
Size 1	1	90.003.97.001
Size 2	1	90.003.97.002
Size 3	1	90.003.97.003
Size 4	1	90.003.97.004

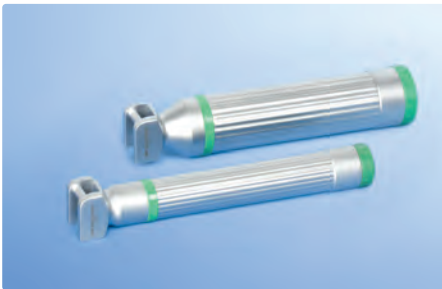
### Miller Blade PJD Fibre Optic

With integrated light conductor – **for single use only**

Description	Pack	REF
Size 00	1	90.003.10.799
Size 0	1	90.003.10.800
Size 1	1	90.003.10.801
Size 2	1	90.003.10.802
Size 3	1	90.003.10.803

# Laryngoscopes

Spare parts, accessories and handles



REF 90.003.09.670-660

## Handle – LED – Fibre Optic

Description	Pack	REF
20 mm Ø, neonatal, with battery	1	90.003.09.002
20 mm Ø, pediatric, with battery	1	90.003.09.670
30 mm Ø, adult, with battery	1	90.003.09.660
30 mm Ø, „short neck“, adult, with battery	1	90.003.09.680

## Handle – LED – with Battery – single use

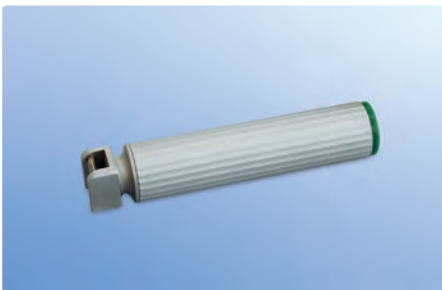
Description	Pack	REF
30 mm Ø, adult, extra light	1	90.003.09.003
30 mm Ø, adult	1	90.003.10.760



REF 90.003.09.002

## LED light capsula for replacement

Description	Pack	REF
LED light capsula	1	90.003.09.001



REF 90.003.09.003

# Laryngoscopes

Set



REF 90.003.08.999-09.000

## LED Laryngoscope Set PJD – Fibre Optic – complete set

With 3 McIntosh Blades and battery

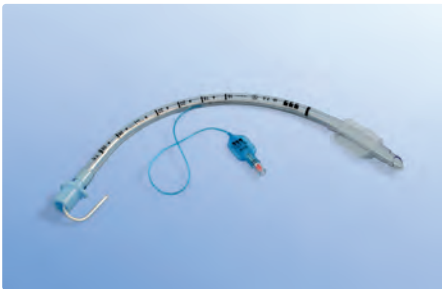
Description	Pack	REF
Handle with battery, pediatric, with 3 blades, size 0, 1 and 2	1	90.003.08.999
Handle with battery, adult, with 3 blades, size 2, 3 and 4	1	90.003.09.000

Additional sets upon request.

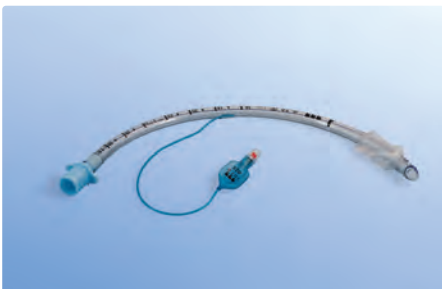


# Endotracheal Tubes

Sterile



REF 44.000.09.060-090



REF 44.000.10.035-100



REF 44.000.11.020-080



REF 44.000.00.006



REF 44.000.00.001

## Endotracheal Tubes Magill, with Murphy-Eye

Size	With cuff with guide wire	with cuff without guide wire	without cuff without guide wire	Pack
2,0	–	–	44.000.11.020	100
2,5	–	–	44.000.11.025	100
3,0	–	–	44.000.11.030	100
3,5	–	44.000.10.035	44.000.11.035	100
4,0	–	44.000.10.040	44.000.11.040	100
4,5	–	44.000.10.045	44.000.11.045	100
5,0	–	44.000.10.050	44.000.11.050	100
5,5	–	44.000.10.055	44.000.11.055	100
6,0	44.000.09.060	44.000.10.060	44.000.11.060	100
6,5	44.000.09.065	44.000.10.065	44.000.11.065	100
7,0	44.000.09.070	44.000.10.070	44.000.11.070	100
7,5	44.000.09.075	44.000.10.075	44.000.11.075	100
8,0	44.000.09.080	44.000.10.080	44.000.11.080	100
8,5	44.000.09.085	44.000.10.085	–	100
9,0	44.000.09.090	44.000.10.090	–	100
9,5	–	44.000.10.095	–	100
10,0	–	44.000.10.100	–	100

## Guide Wire for Endotracheal Tubes

Single packed, sterile

Description	Pack	REF
CH 06, for ET tubes size 2-5,5	20	44.000.00.006
CH 10, for ET tubes size 6-10	20	44.000.00.001

Available in August 2015.

# Endotracheal Tubes

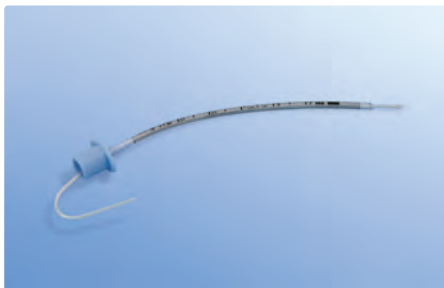
Sterile



REF 44.000.30.035-100



REF 44.000.20.035-100



REF 44.000.21.020-050

## Endotracheal Tubes pre-formed/reinforced, with Murphy-Eye

Size	Pre-formed with cuff with guide wire	Reinforced with cuff with guide wire	Reinforced without cuff with guide wire	Pack
2,0	–	–	44.000.21.020	100
2,5	–	–	44.000.21.025	100
3,0	–	–	44.000.21.030	100
3,5	44.000.30.035	44.000.20.035	44.000.21.035	100
4,0	44.000.30.040	44.000.20.040	44.000.21.040	100
4,5	44.000.30.045	44.000.20.045	44.000.21.045	100
5,0	44.000.30.050	44.000.20.050	44.000.21.050	100
5,5	44.000.30.055	44.000.20.055	–	100
6,0	44.000.30.060	44.000.20.060	–	100
6,5	44.000.30.065	44.000.20.065	–	100
7,0	44.000.30.070	44.000.20.070	–	100
7,5	44.000.30.075	44.000.20.075	–	100
8,0	44.000.30.080	44.000.20.080	–	100
8,5	44.000.30.085	44.000.20.085	–	100
9,0	44.000.30.090	44.000.20.090	–	100
9,5	44.000.30.095	44.000.20.095	–	100
10,0	44.000.30.100	44.000.20.100	–	100

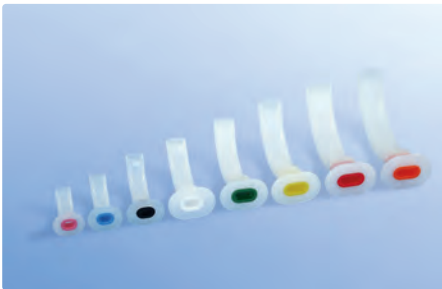
ET Tubes reinforced with cuff and without cuff.

Please note: Some sizes are at present only available without guide wire.

Please contact us for further details.



# Tubes



REF 73.890.00.000  
73.900.00.000-500

## Guedel Tubes

Made of semi transparent medical grade PVC with colour coded bite blocks, standard rigidity, single packed, sterile

Description	sterile	Pack	REF
Size 000, pink	yes	25	73.890.00.000
Size 00, blue	yes	25	73.900.00.000
Size 0, black	yes	25	73.900.00.010
Size 1, white	yes	25	73.900.00.100
Size 2, green	yes	25	73.900.00.200
Size 3, yellow	yes	25	73.900.00.300
Size 4, red	yes	25	73.900.00.400
Size 5, orange	yes	25	73.900.00.500

As above – non sterile

Description	sterile	Pack	REF
Size 000, pink	no	10	73.800.89.999
Size 00, blue	no	10	73.800.90.000
Size 0, black	no	10	73.800.90.010
Size 1, white	no	10	73.800.90.100
Size 2, green	no	10	73.800.90.200
Size 3, yellow	no	10	73.800.90.300
Size 4, red	no	10	73.800.90.400
Size 5, orange	no	10	73.800.90.500

The above mentioned sizes correspond to the Euro standard (respectively one size bigger than the US standard) and they are colour coded.



REF 43.008.03.060

## Nasopharyngeal Tubes (Wendl Tubes)

Single packed, for single use

Description	sterile	Pack	REF
Size 6,0	yes	20	43.008.03.060
Size 6,5	yes	20	43.008.03.065
Size 7,0	yes	20	43.008.03.070
Size 7,5	yes	20	43.008.03.075
Size 8,0	yes	20	43.008.03.080
Size 8,5	yes	20	43.008.03.085

# Tubes/Respiration

## Respiration Masks for single use



REF 44.000.60.010-050

### Laryngeal Mask single-use, sterile

With inflatable silicone cuff

Description	Pack	REF
Size 1	50	44.000.60.010
Size 1,5	50	44.000.60.015
Size 2	50	44.000.60.020
Size 2,5	50	44.000.60.025
Size 3	50	44.000.60.030
Size 4	50	44.000.60.040
Size 5	50	44.000.60.050



REF 51.480.00.000-006

### Respiration Masks – single use

With inflatable cuff

Description	Pack	REF
Size 0, neonatal	50	51.480.00.000
Size 1, infant	50	51.480.00.001
Size 2, pediatric	50	51.480.00.002
Size 3, adult, small	50	51.480.00.003
Size 4, adult, medium	50	51.480.00.004
Size 5, adult, large	50	51.480.00.005
Size 6, adult, extra large	50	51.480.00.006



REF 51.481.00.001-005

### Respiration Masks – single use ECOPlus

Open Cuff

Description	Pack	REF
Size 1	50	51.481.00.001
Size 2	50	51.481.00.002
Size 3	50	51.481.00.003
Size 4	50	51.481.00.004
Size 5	50	51.481.00.005

# Respiration

## Respiration Masks



REF 51.500.00.030-060

### Respiration Mask – Silicone

Inflatable cuff, blue

Description	Pack	REF
Size 3	100	51.500.00.030
Size 4	100	51.500.00.040
Size 5	100	51.500.00.050
Size 6	100	51.500.00.060



REF 51.500.00.010-012

### Respiration Mask – 100 % Silicone

Open cuff, transparent

Description	Pack	REF
Size 3	120	51.500.00.010
Size 4	120	51.500.00.011
Size 5	120	51.500.00.012

### Respiration Mask – Silicone Round

Transparent

Description	Pack	REF
Size 0, neonatal	1	51.500.00.000
Size 0/1, infant	1	51.500.00.001
Size 2, pediatric	1	51.500.00.002



REF 51.500.00.000-002

### Respiration Mask – Silicone

Open cuff

Description	Pack	REF
Size 3, infant/pediatric	1	51.500.00.003
Size 4, pediatric/adult	1	51.500.00.004
Size 5, adult	1	51.500.00.005



REF 51.500.00.003-005

# Respiration

## Resuscitator Sets



REF 48.010.55.004

### Resuscitator Set – Infant/Pediatric/Adult

With oxygen reservoir, oxygen tubing, two masks and Pop Off Valve – **for single use only**

Description	Pack	REF
Infant, incl. mask 0 and 1	24	48.010.55.104
Pediatric, incl. mask 2 and 3	24	48.010.55.204
Adult, incl. mask 4 and 5	24	48.010.55.004

### Resuscitator Set – Neonatal/Infant

With Pop Off Valve, 280 ml

Description	Pack	REF
Incl. mask 0 and 1	1	51.500.00.100
Incl. mask 0 and 1, oxygen reservoir 600 ml	1	51.500.00.303
Without mask	1	51.500.00.458

### Resuscitator Set – Pediatric

With Pop Off Valve, 550 ml

Description	Pack	REF
Incl. mask 2 and 3	1	51.500.00.200
Incl. mask 2 and 3, oxygen reservoir 600 ml	1	51.500.00.302
Without mask	1	51.500.00.454



REF 51.500.00.300

### Resuscitator Set – Adult

Without Pop Off Valve, 1.700 ml

Description	Pack	REF
Incl. mask 4 and 5	1	51.500.00.300
Incl. mask 4 and 5, oxygen reservoir 2.500 ml	1	51.500.00.301
Without mask	1	51.500.00.452
Without mask <b>with Pop Off Valve</b>	1	51.500.00.453